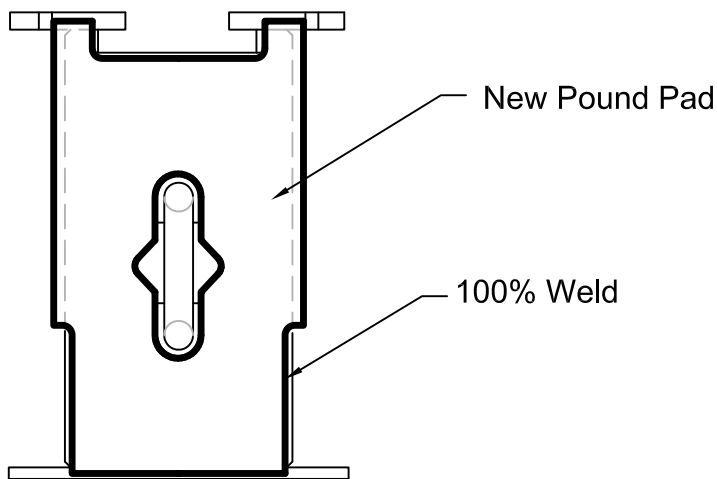
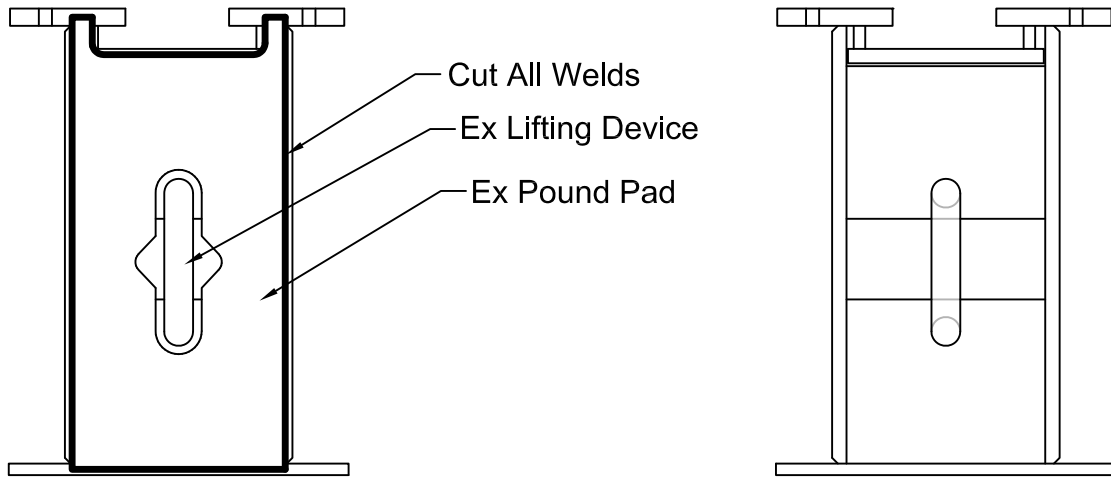



## Spreader Post

1. Cut-Off Old Pound Pad.
2. Inspect Lifting Device
3. Weld on New Pound Pad 100%



Subject To  
Engineering Approval.

All Information Included Or Referenced  
Herein Shall Be Treated As Confidential  
To Pro-Tec Equipment © 2014

|   |  |                                   |
|---|--|-----------------------------------|
|  | <b>PRO-TEC Equipment</b>   |                                   |
|   | 4837 W. Grand River Ave. Lansing, MI 48906 (517) 827-3250 1-800-292-1225 |                                   |
|   | Customer: ~  | Page 1 Of 1                       |
|   | Dwg. # Slide Rail Repair Procedure-New Spreader Post Lifting Device      | Slide Rail Panel Repair Procedure |
| Date: 05-June-2017  | By: FM   |                                   |